

dandelion  
waxing · nails · lash

3in1  
Repair, Coating & Styling  
**NEW!**

RERUJU  
Eyelash Coating Pro  
アイラッシュコーティングプロ

Made in Japan

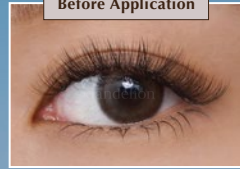
dandelion  
waxing · nails · lash

RERUJU

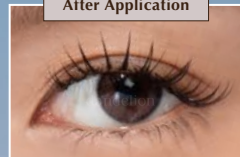
Eyelash Coating Pro  
アイラッシュコーティングプロ

Create Your Textured-Wet Look Lash Now!

Before Application



After Application



Washable with Water & LAST ALL DAY!

Vita is using: #EspressoLash Soft Volume SC Curl 0.06 10~12mm Gorgeous Design, Bottom Lash: Volume J 0.06 8mm  
+ Styled using RERUJU Eyelash Coating Pro

**RERUJU Eyelash Coating Pro (アイラッシュコーティングプロ)**  
is a 3in1 **Repair – Coating – Styling** lash mascara that **can be used on your lash extensions/lash lift**, to create 束感 たばかん 'Tabakan' look that is very popular in Japan.

*'Tabakan in Japan is similar like 'Manga' style look, lash are combined into apparent spikes/clusters*

## BENEFITS

### • Styling

Easy to create a textured-wet look 束感 たばかん 'Tabakan'.

### • Nourishing

Packed with a lot of eyelash care ingredients like: keratin & silk protein to nourish, repair broken lash, make it healthier & thicker. Safe to be used everyday.

### • Protecting

Protects lash extensions from sweat, oil and tears, increasing their retention. On bare lashes, it can be used as the base before your black mascara too.

### • Increased Shine & Shape

Adds glossy 'wet' finish to your lashes, maintain its tidy shape all day long.

### • Water-washable

Although it last long, it is easily washable with warm water & cleanser.

Easy to use curved applicator  
Fine & Soft Bristles

Made in Japan

**FREE!**  
styling tweezer  
for every purchase

**IDR 600.000** (7ml)

<b>Color</b>	Clear
<b>Texture</b>	Medium
<b>Expiry</b>	1 year after opening & use

Reruju Eyelash Coating Pro is a lash salon-exclusive product produced by AIJ Co., Ltd. – Tokyo • reruju.com