

Lash

Catalogue



dandelion
waxing · nails · lash

 @dandelion.id

Lash Variations

ラッシュバリエーション

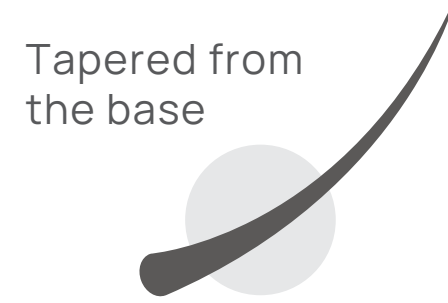
Single Lash

シングルラッシュ

One extension glued to one natural lash



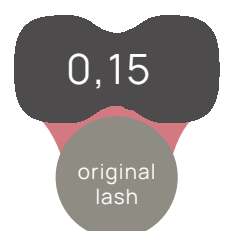
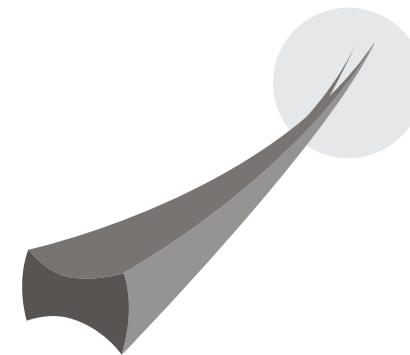
#CleanLash



Thickness: 0.12 (#HyperRealistic), 0.15, 0.18, 0.2



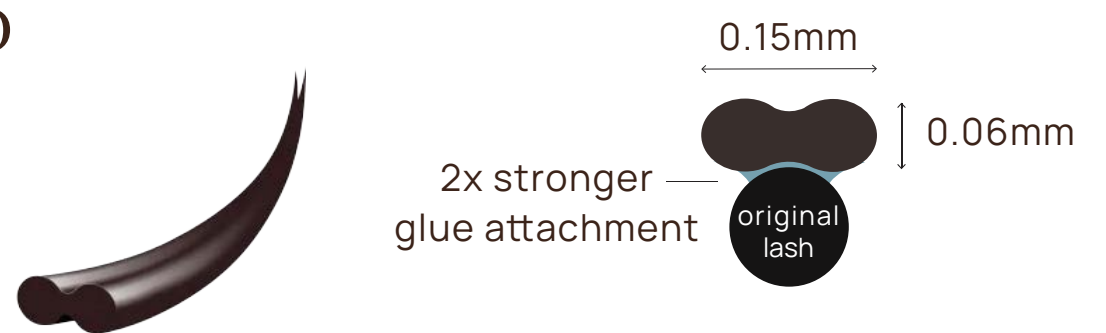
Flat Lash #SuperSoft



Thickness: 0.15, 0.2



#HyperRealistic OUD



Thickness: 0.15

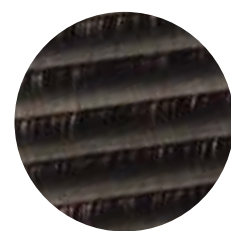
Volume Lash

ボリュームラッシュ

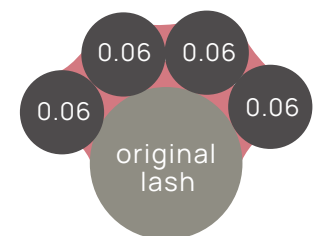
Soft Volume : 3-4 lash strands • Rich Volume : 4-5 lash strands



BLACK #CleanLash



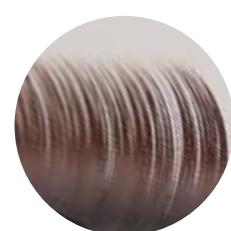
Superfine extensions



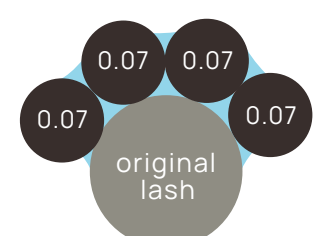
Thickness: 0.06



OUD Lash



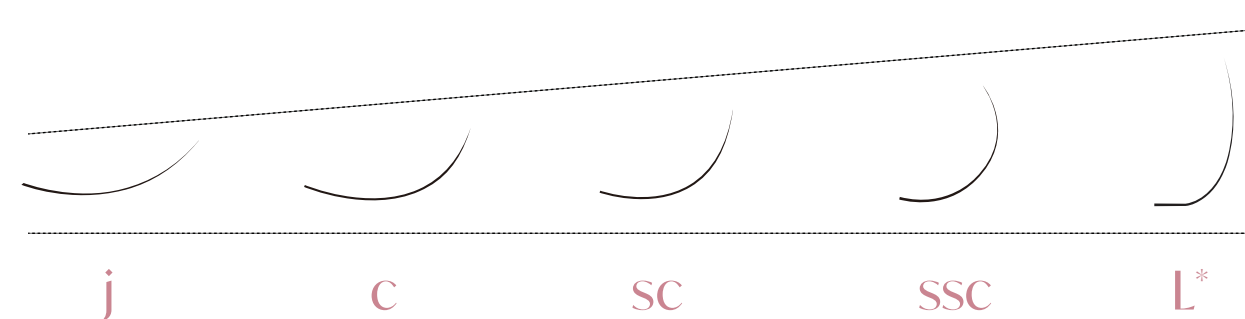
Dark brown hue



Thickness: 0.07

Curl

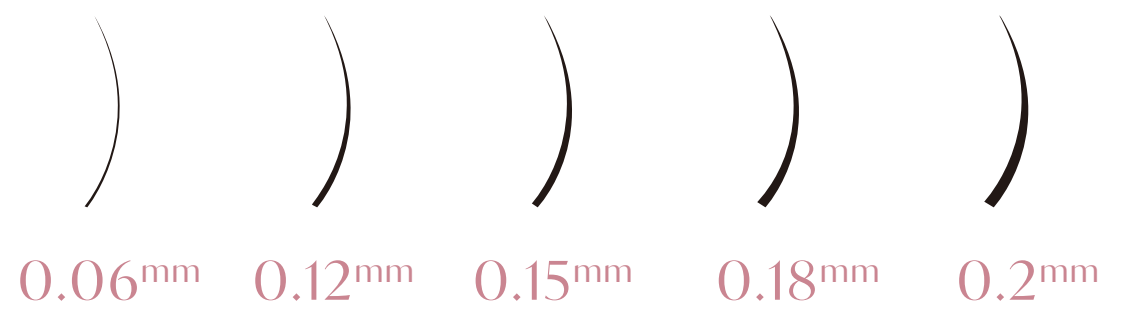
カール



*Only available in 0.15 Flat Lash

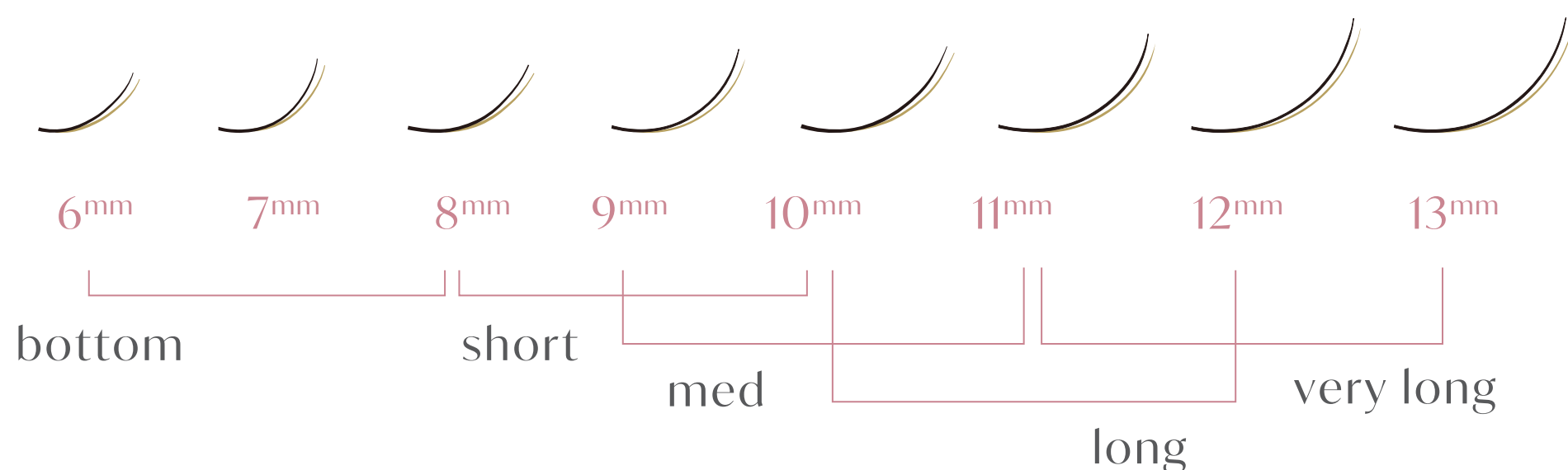
Thickness

太さ



Length

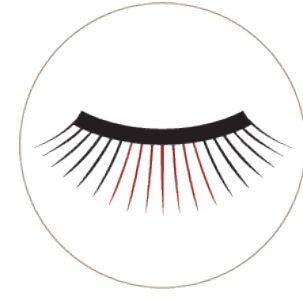
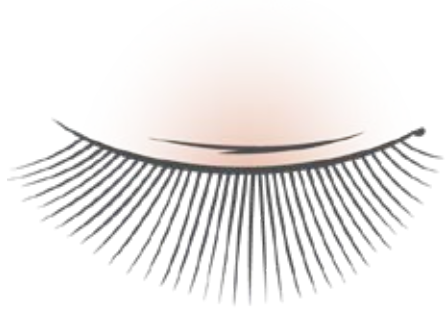
長さ



Cute

キュート

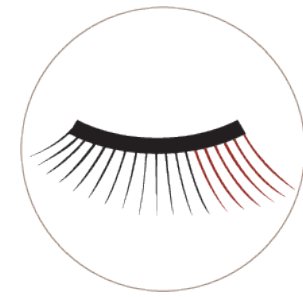
- Longest in the center of the eyes
- Makes the eyes bigger/rounder
- Best for any eye shapes



Sexy

セクシー

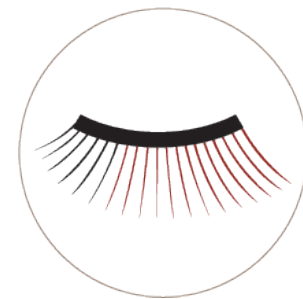
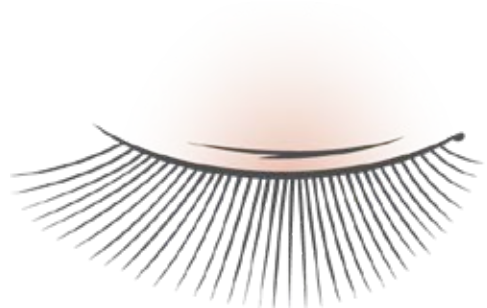
- Longest near the end of the eyes
- Creates a wing-effect - makes the eyes look longer
- Best for almond eye shapes



Gorgeous

ゴージャス

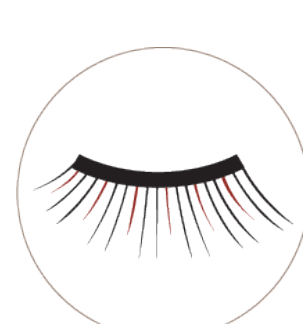
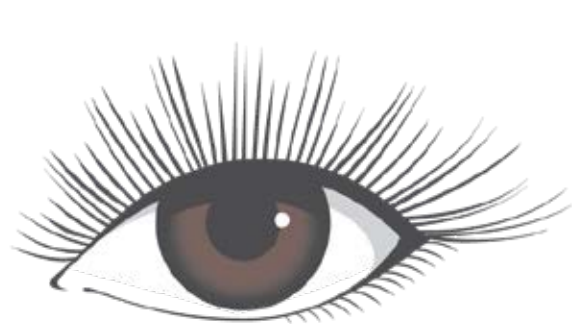
- Long & volume all around the center & the end of eyes
- Makes the eyes look full & enhanced
- Best for a more dramatic look



Natural Volume

ナチュラル ボリューム

- The length will mimic the pattern of original lash
- Makes the eyes look natural yet volumized
- Best for any eye shapes



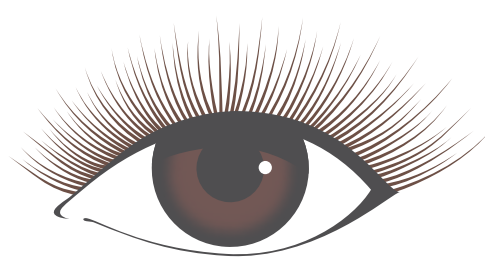
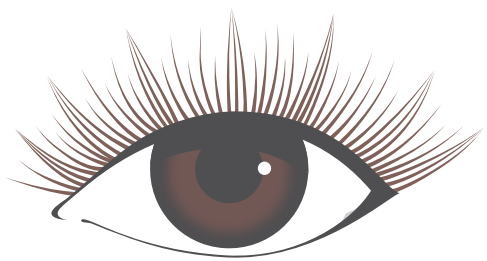
Brown Anime

ブラウンアニメ

Brown Point

ブラウンポイント

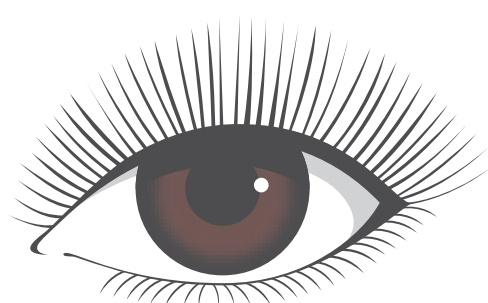
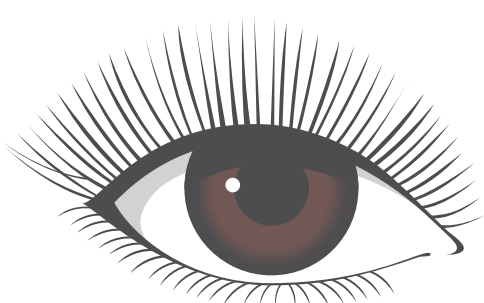
- Two special lash designs 2026 using OUD brown color
- Textured with subtle spikes



+ Bottom Lash

下まつげ

- Making the whole eyes even brighter & more balanced
- A favorite in Japan!



FAQs

1. Is it painful / itchy? Does it sting?

Not at all, in fact you will not feel anything and will most likely fall asleep during process.

2. Process duration?

1.5 – 2 hours working time.

3. Will it make my original lash fall faster / damage my original lash?

No, lash extensions will fall down following your original lash growth cycle. Lash extensions will not reduce your lashes or make them go bald. Correct lashing technique will only glue the extension(s) to ONE original lash (1^{mm} away from the root, never on the skin) therefore will not interrupt the growth and condition of the original lash.

*Note: Lash curler is proven to be more damaging, since it forcefully bends the original lash & often accidentally break or pluck some lash in the process.

4. How long will it last?

4 to 5 weeks – depending on your maintenance, skin type, and weather. Recommended refill time: 3 weeks (with max 2x refill, then please remove & restart the full set for maximum result).

Introducing **L COAT** (L COAT • Lコート) – is a coating layer applied on top of your lash extensions or lash lift, cured using safe LED light. Add lash durability & improve lash retention by 1-2 weeks. Also, helps improve lash tidiness, maintain their form and shape for weeks.

L COAT is safe for your skin and health, causing no damage to natural lashes. **L COAT** for lash lift contains keratin to nourish the lash & it is waterproof.

5. Are our products safe?

Dandelion only uses medical-grade adhesives that are low fume, formaldehyde-free, MMA-free (Methyl Methacrylate) and long lasting (Made in Japan). All our glues are updated yearly, using latest better formula. We also only use premium synthetic lash that are cruelty-free & more hygienic.

Why Dandelion?

- We only use Japan synthetic sable lashes which are ultra-light weight & antibacterial.
- Our extensions are so comfortable, you will feel literally nothing on your eyes after the extensions.
- Comprehensive selections of curls & thickness that you can customize according to your personal style.
- Our lash stylists are professionally trained following international standard.
- Certified internationally by Japan Lash Association (JLA) since 2016 & Nippon Eyelash Extensions Association (NEEA) since 2017.
- All lash products are imported from Tokyo & Osaka, Japan. Japan style lash has a thinner root which creates a more natural and elegant look.
- The first to bring **LCOAT** to Indonesia & only at **dandelion**
LCOAT is a new patented technology from 株式会社ビュプロ (BeauPro) Japan.



All our Japan lash products have also obtained MATSUREN (Lash Safety Association of Japan) which ensures the safest material used, such as: **all glues are made in Japan, have low-fume, No-formaldehyde & No-MMA.**

Our Locations

JAKARTA

Jl. Metro Pondok Indah SB-09, Jakarta Selatan	_____	+62 8121 622 622
Jl. Senopati No. 66, Jakarta Selatan	_____	+62 811 900 9919
Jl. Pakubuwono VI no. 12, Kby. Baru, Jakarta Selatan	_____	+62 811 900 1131
Jl. Wahid Hasyim No. 47, Menteng, Jakarta Pusat	_____	+62 811 900 9210

SURABAYA

Taman Gapura E2 No. 7, Citraland, Surabaya Barat	_____	+62 811 3909 23
Jl. Dharmahusada Indah Timur RR-19, Surabaya Timur	_____	+62 811 3199 009